

D4 AUTOMATIC PLASTERING MACHINE



Product Description

D4 Automatic Plastering Machine has a faster speed and more stable performance, greatly reduces the labor input and labor intensity, and improves the work efficiency and construction quality. It is an ideal choice for large-scale plastering construction project.



High Efficiency

It only need 2or3 people to operate it, plastering 500 square meters a day, A faster speed and a more stable performance



High Quality

A molding, Vertical flatness error within 2mm, No empty durm cracking



High Yield

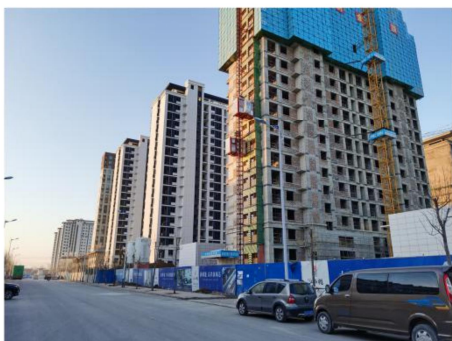
Save cost to improve profit, Reduce the risk of injury, Greatly improve the work efficiency, Ensure the construction period



Parameter Indicators

Mode	D4-Automatic Plastering Machine		
Voltage	380V	UniversalWheel	Blickle
PlasteringHeight	350CM	PositioningLevelingMode	MicrocomputerAutomaticPosi
PlasteringThickness	0.3-3.5CM	Hopper Capacity	100L
VerticalRodMaterial	Aluminum	PlasteringWidth	120CM
Motor	Servomotor	Size (Length,Width,Height)	110*65*70CM
Weight	140KG	Power	2.6KW
Plastering Material	ManganesePlate	After-sales Service	Warranty 1 Year
Scope of Application	Cement Mortar、 Finished Mortar、 Self-mixing Mortar、 Lime Mortar、 Clay Heavy Gypsum		

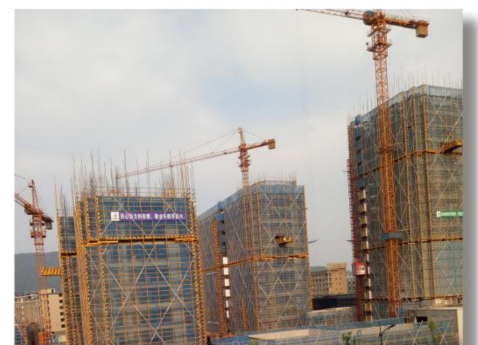
EngineeringApplication



Construction project in Dangshan County, Anhui province



Construction project in Taiyuan County, Shanxi province



Construction project in Zhejiang province