

AIRLESS SPRAYER

D795 D595 D395



Product Description

High-pressure airless sprayer series are self-developed. The core pump body is all independent production, it is durable and strong power, which is the best choice for spraying all kinds of water-based latex paint, water-based paint.



Environmental Protection

Suitable for spraying all kinds of paint coating, to meet different construction environment, the most cost-effective flexible choice, stable and durable



Safety

Mechanical plunger pump system, stable pressure output, sensitive operation of electronic pressure regulation, to provide lasting and stable power



Reduce Labor Intensity

High pressure spray gun, quantitative measurement, to ensure uniform and stable work, long time work, one person operation



High Quality

It can easily deal with high viscosity coating, and can produce higher pressure atomization under the same conditions of nozzle, and the atomization effect is good



High Efficiency

A day to spray 2500 ~ 4000 square meters, support double gun spraying, good adhesion, no manual secondary scraping



High Coverage

Make paint particles deep wall gap, so that the paint film and the wall forming mechanical bite, wall coverage is high

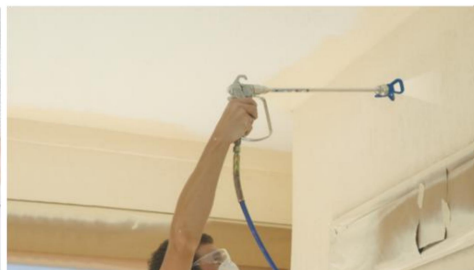
Parameter Indicator

Mode	High-pressure airless sprayer -D795 D595 D395		
Voltage	220V	Flow	6.5L/min
Power	3500W	Motor	Brushless Machine
Operating Voltage	23Mpa	Voltage Regulation Mode	Electronic Voltage Regulation
Weight	33KG	After-sales Service	Warranty 1 Year
Scope of Application	Thin putty, paint, coating		

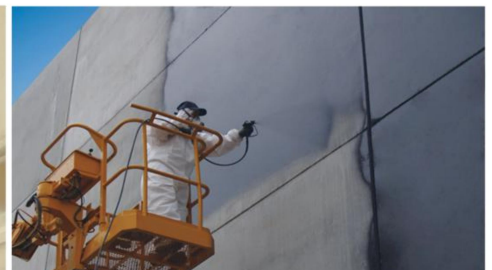
Engineering Application



Highway Construction Scene



Hotel Construction Scene



Site Construction Scene

Airless sprayer is easy to deal with industrial decoration and family decoration, light and comfortable and easy to operate, minimize downtime, fan-shaped atomizing, high-pressure spray gun, even and fine atomization, better adhesion. It is suitable for large, medium and small buildings, steel structure, floor, bridge, wood and other places that need painting. It is lightweight and cost-effective.